

From: "Pop/Rock Anthology - CD-Rom Sheet Music"

Love Shack

by

CYNTHIA WILSON, KEITH STRICKLAND,
FREDERICK SCHNEIDER and CATHERINE E. PIERSON

Published Under License From

Kobalt Music Publishing America, Inc.

© 1989 EMI BLACKWOOD MUSIC INC. and MAN, WOMAN TOGETHER NOW INC.
All Rights Controlled and Administered by EMI BLACKWOOD MUSIC INC.
All Rights Reserved International Copyright Secured Used by Permission

Authorized for use by *Karen Nave*

NOTICE: Purchasers of this musical file are entitled to use it for their personal enjoyment and musical fulfillment. However, any duplication, adaptation, arranging and/or transmission of this copyrighted music requires the written consent of the copyright owner(s) and of Musicnotes.com. Unauthorized uses are infringements of the copyright laws of the United States and other countries and may subject the user to civil and/or criminal penalties.

LOVE SHACK

Words and Music by
CATHERINE E. PIERSON, FREDERICK W. SCHNEIDER,
KEITH J. STRICKLAND and CYNTHIA L. WILSON

Moderate Rock

N.C.

Jeff

If you see a faded sign at the side of the road — that says,

mf

Jillia

“Fif - teen miles to the Love Shack.” —

C7 Gm7

Alayna

Love Shack, yeah, — yeah. — I'm

C7 Gm7

© 1989 EMI BLACKWOOD MUSIC INC. and MAN, WOMAN TOGETHER NOW INC.
All Rights Controlled and Administered by EMI BLACKWOOD MUSIC INC.
All Rights Reserved International Copyright Secured



head - ed down the At - lan - ta high - way,

Alman
J



look - in' for the love get - a - way,



head - in' for the love get - a - way. I got me a car. It's as
Hop in my Chry-sler, it's as



big as a whale, and we're head - in' on down to the Love Shack. I
big as a whale, and it's a - bout to set sail. I

C7

Gm7

C7

Gm7



got me a Chry - sler, it seats a - bout twen - ty. So, hur - ry up and bring your
 got me a car, it seats a - bout twen - ty. So, come on and bring your

ALL

C7

Eb



juke - box mon - ey. } The Love Shack is a lit - tle old place where
 juke - box mon - ey. }

F7

Ab

C7

Gm7



we can get to - geth - er.

C7

Gm7

Jeff



Love Shack, ba - by. Love Shack, ba - by.

C7

Gm7

C7

Gm7

Love Shack, ba - by, Love _ Shack, Love Shack, ba - by, Love _

To Coda

C7

Gm7

_ Shack, Love Shack, ba - by, Love _ Shack,

C7

Gm7

C7

Gm7

Love Shack, ba - by, Love _ Shack. Sign says

C7

Gm7

"Stay a - way fools, _ 'cause love rules at the Love Shack." Well, it's set

Shea

N.C.

way back in the mid - dle of a field. _ Just a funk - y old shack and I

GIFTS

C7

Gm7

got - ta get back. _____ Glit - ter on the mat - tress, _____

C7

Gm7

C7

Gm7

glit - ter on the high - way, _____ glit - ter on the front porch, _____

C7

Gm7

ALL

glit - ter on the hall - way. _____ The

C7



E♭



F7



Love Shack is a lit - tle old place where we can get

A♭



C7



Gm7



to - geth - er. Love Shack, ba - by.

C7



Gm7



2 4 F L

C7



All

Gm7



Love Shack, ba - by. Love Shack, that's

C7



Gm7



where it's at. Love Shack, that's where it's at.

2 of 1

C7



Gm7



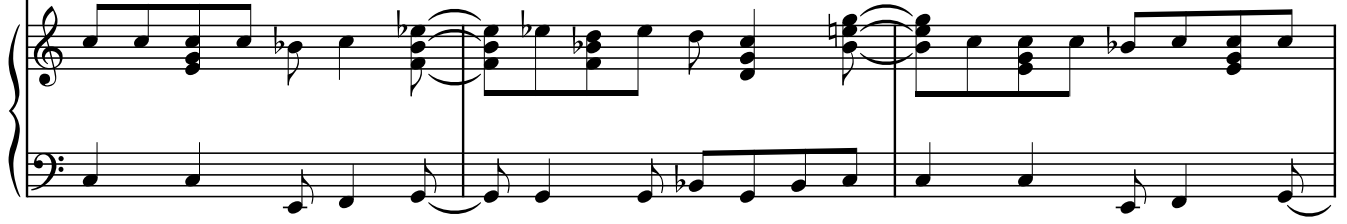
C7



Gm7 7



Hug-gin' and a - kiss - in', danc - in' and a - lov - in', wear - in' next to noth - in' 'cause it's



C7



Gm7



hot as an ov - en. The whole shack shim-mies. Yeah, the



C7



Gm7



C7



Gm7



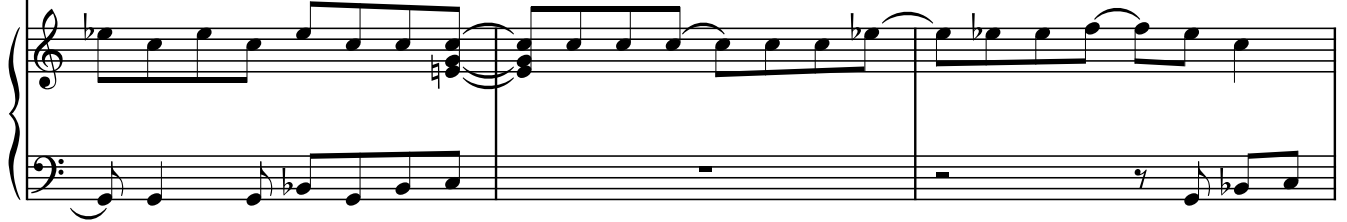
whole shack shim-mies. The whole shack shim-mies when



N.C.



ev - 'ry - bod - y's mov - in' a - round _ and a - round _ and a - round _ and a - round. _____



C7



Gm7



C7



Gm7



Left

Ev - 'ry - bod - y's mov - in', ev - 'ry - bod - y's groov - in', ba - by. *Folks lin - in' up out - side*

ALL

C7



Gm7



just to get down. Ev - 'ry - bod - y's mov - in', ev - 'ry - bod - y's groov - in', ba - by.

Left

C7



Gm7



C7



Gm7



Funk - y lit - tle shack, funk - y lit - tle shack.

C7


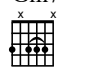
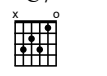
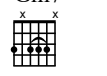


Gm7 | 1.

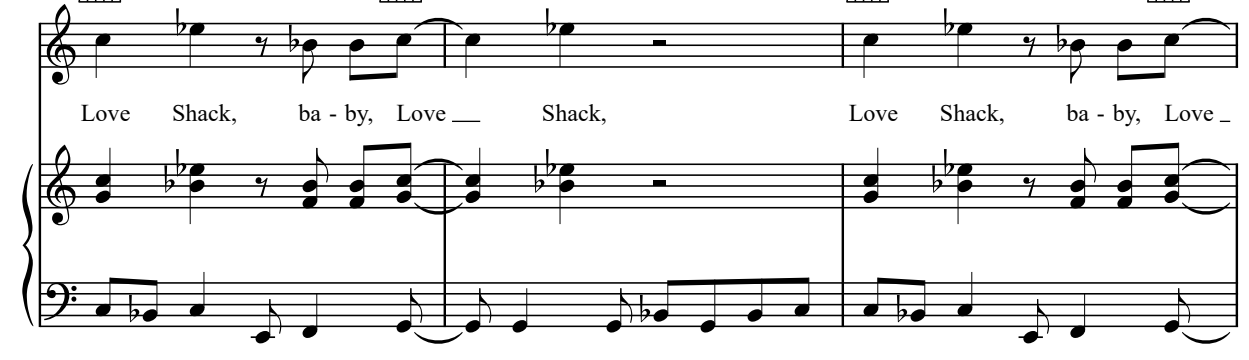


| 2.

D.S. al Coda

Coda ^{C7}  ^{Gm7}  ^{C7}  ^{Gm7} 

Love Shack, ba-by, Love Shack, Love Shack, ba-by, Love



N.C.

Shack.

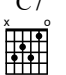
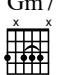
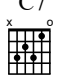
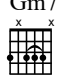


^{C7}  ^{Gm7}  ^{C7}  ^{Gm7}  |1-3


Bang, bang, bang on the door, ba-by.

*Knock a lit-tle loud-er, ba-by.
I can't hear you.
Knock a lit-tle loud-er, bang ar.*



4 ^{C7}  ^{Gm7}  ^{C7}  ^{Gm7} 

I can't hear you. Bang, bang, bang on the door, ba-by, bang, bang, bang



C7

Gm7

C7

Gm7



on the door, ba - by. Bang, bang on the door, - ba-by, bang, bang

1.

2.

Handwritten blue notes: 'riff' with a vertical line pointing to the guitar part.

C7

N.C.



on the door. - Your what? Tin ____ roof rust-ed.

Handwritten blue 'AM' with a vertical line pointing to the guitar part.

C7

Gm7

C7

Gm7



Love Shack, ba - by, Love ____ Shack, Love Shack, ba - by, Love -

1.

2.

C7



____ Shack. ____ Shack.

rit.